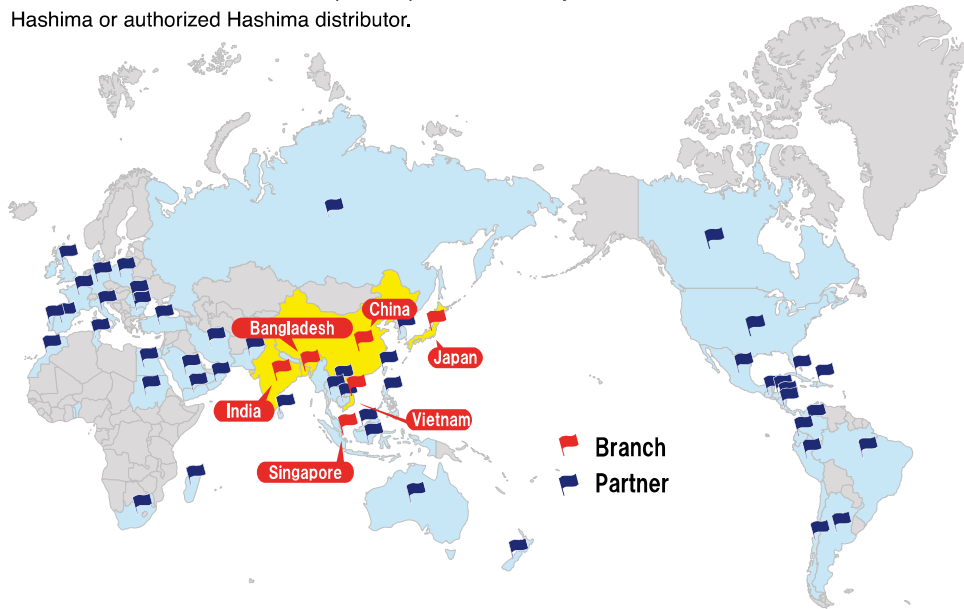


## Hashima has been sold Needle Detector more than 114 countries

Hashima's Needle Detector has been sold not only in Japan but also in more than 114 countries around the world, and we have a global network of distributors.

For maintenance and service inquiries, please contact your nearest Hashima or authorized Hashima distributor.



**HEAD OFFICE** : 7-6, RYOGE GIFU-CITY, JAPAN

TEL 81-58-247-8400, 81-58-245-4501 FAX 81-58-240-5775

**KUNSHAN(CHINA) OFFICE** : TEL : 86-512-57771838 FAX : 86-512-57771848

**SINGAPORE OFFICE** : TEL 65-62858131 FAX 65-62858132

**INDIA OFFICE** : TEL : 91-80-41540315 FAX : 91-80-25592002

**BANGLADESH OFFICE** : TEL : 880-2-7913655 FAX : 880-2-7913099

**VIETNAM OFFICE** : TEL : 84-226-3555840 FAX : 84-226-3555841

\*Specifications and performance are subject to change without notice due to product improvement.

WEB site



Agent

<http://www.hashima.co.jp/>

# HASHIMA GENERAL CATALOG

## Inspection Machine Series



New Release!

# The best of Needle Detector in the industry

In production since 1994 and soon to be 30 years old .Over 22,000 single type needle detector produced.Over 5,500 two-head type needle detector produced.Cumulative total of needle detector machines: over 27,500 units

※ As of July 2023

Conveyor type  
Needle detector  
(single-head)

HN-880CS  
HN-790GS

■ 7inch color LCD



Conveyor type  
Needle detector  
(two-head)

HN-2880CS  
HN-2790GS

■ 7inch color LCD



# CONVEYOR TYPE

## Selectable 2-mode system Standard mode & AP mode

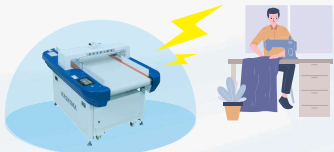
The new CS type is equipped with a Standard mode and an AP mode that emphasizes the passage of accessories with Hashima Original Technology.

### Standard Mode

Reference Video for Noise Reduction



Added as a Standard mode for the CS type equipped with new noise cancellation function. In order to achieve high inspection capacity and outside noise that affects the operation of the Needle Detector minimizes the impact.

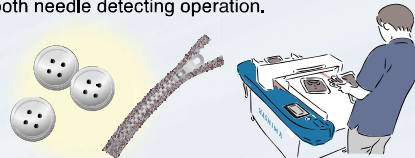


### AP Mode (Accessories Pass-through Mode)

Reference Video for AP mode



This mode also emphasizes the passage of clothing accessories and other items. It can be switched when necessary. High detection capability remains the same with stable area sensitivity, and the high passability of accessories compatible with needle detection has been realized. The improved passability enables smooth needle detecting operation.



## Fastest conveyor speed in the industry

Hashima's Conveyor Needle Detector has high belt rotation speed, so it can achieve high productivity and improved work efficiency.



Reference Video for conveyor speed

## Fe φ0.8mm can be detected with a gate height of 120mm

120 mm height is standard, and 140, 160, and 180 mm are available as factory options. (Refer to factory options below)

**The only one in the industry.**



Reference Video for Gate Height

### SPECIFICATIONS

MODEL	HN-880CS	HN-790GS	HN-2880CS	HN-2790GS
DETECTION METHOD	MAGNET INDUCTION			
DETECTION Bailey	Fe0.8φ sphere or above			
SENSITIVITY ADJUSTMENT	DECIMAL(100steps) or SIZING (6steps)			
DETECTION WIDTH	600mm			
DETECTION HEIGHT	120mm (standard)			
ALARM METHOD	BUZZER POSITION LAMP			
BELT SPEED	40~15m/min.			
POWER SUPPLY	single phase			
RATED OUTPUT	150W			
DIMENSIONS	1598(L)×950(W)×903(H)		2423(L)×1040(W)×903(H)	
NET WEIGHT	230kg		374kg	
PRODUCT GUIDER	Standard		Standard	

※Use non ferrous metal accessories for garments. ※Read instruction manual & test machine sensitivity before using. ※The specification is under standard test condition. ※We Have no responsibility that needle chip, iron chip etc. Come out after detecting under non-standard condition.

### FACTORY OPTION

MODEL	SENSOR HEIGHT	MAX. SENSITIVITY
HN-880CS	120mm	Fe 0.8φ
	140mm	Fe 1.0φ
	160mm	Fe 1.2φ
	180mm	Fe 1.5φ
HN-790GS	120mm	Fe 0.8φ
	140mm	Fe 1.0φ
	160mm	Fe 1.2φ
	180mm	Fe 1.5φ
HN-2790GS	120mm	Fe 0.8φ

※Please note that the sensitivity level that can be used may be limited by the surrounding environment and the product to be inspected.

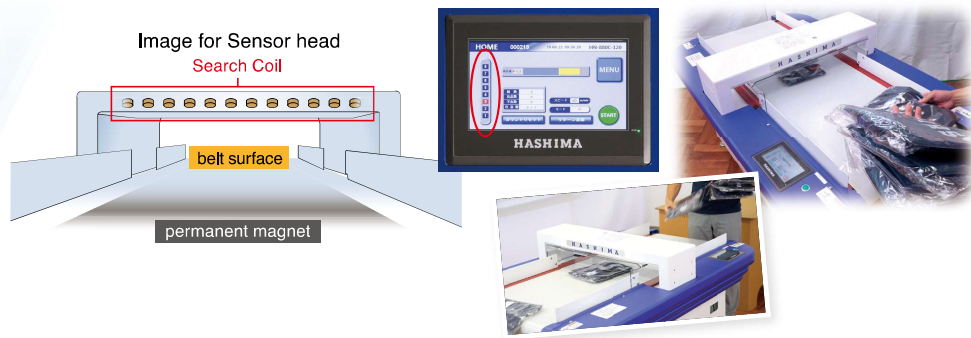
H A S H I M A

### Equipped with Detection Position Lamp

Hashima's unique sensor head uses a split detection coil, so when there is a detection, a lamp will indicate the position of the broken needle.

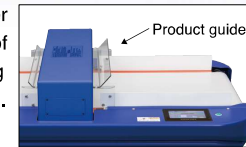


Reference Video for  
Detection Position Lamp



### Products Guider as standard

The product guider helps inspection of thick clothing without malfunction.



### Equipped with Hashima original conveyor belt

Conveyor belts used in Hashima's needle detector are developed and manufactured in-house.



### Supper Fine Mode is equipped as standard

Hashima's unique sensor head system makes it easier for accessories to pass through by inspecting them in supper fine mode. (Conveyor speed moves slowly.)



Reference Video for  
Supper Fine Mode

### Installation Environment Check function is equipped

With Installation Environment Check Function, you can find the suitable site for Needle Detector.



Reference Video for  
Installation Environment

## Auto PreChecker®

### Simplification of daily inspection! Increased work efficiency!

#### Auto PreChecker®

Auto PreChecker makes sensor checking more accurate and quicker. By using PreCheck Bar (Specialized test block) & system, you do not need to check each coil one by one, the system checks sensors automatically. Also you can keep the PreCheck result if you prepare the optional printer. (\*PATENT PENDING, TRADEMARK REGISTRATION PENDING.)



Reference Video for  
Auto PreChecker



PreCheck Bar

OPTIONAL  
THERMAL  
PRINTER



HASHIMA EXCLUSIVE PRINTER  
BY CITIZEN



PreCheck Report

### Optional accessories for Needle Detector

#### HN-S2 Chuter



▲Auto sorting Chuter



▲HR-5050N



▲Count Monitor



▲Indication Light

▲Foot Switch

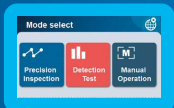
# Hashima's Needle Detector inspections are changing!

## Needle Detector New Inspection Service

A new inspection service that provides factory-level inspections at the installation site by authorized Hashima technicians.



Compatible models HN-670, 870, 880C series



Calibration screen



Data can be imported to PC

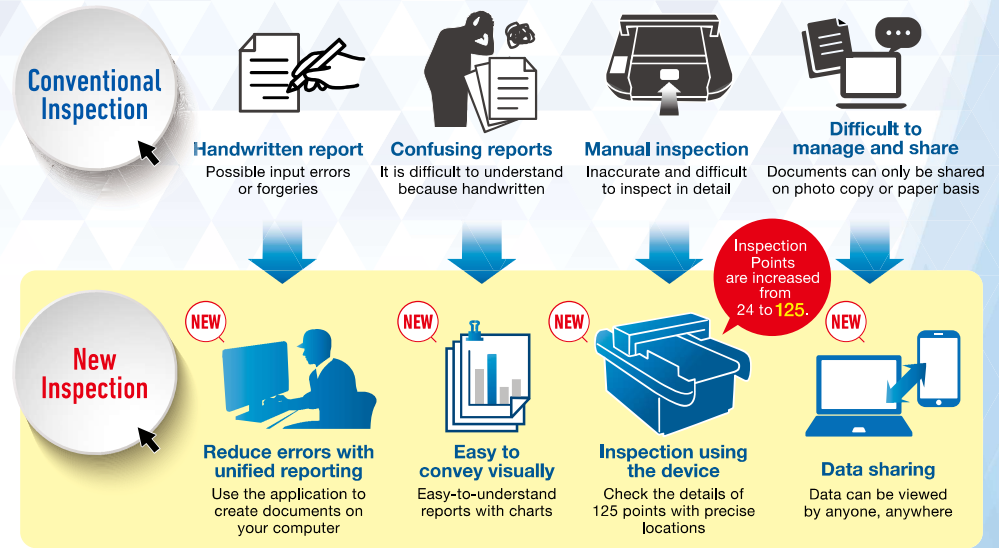
### Hashima Needle Detector Inspection Service Introduction Movie

Check out the video



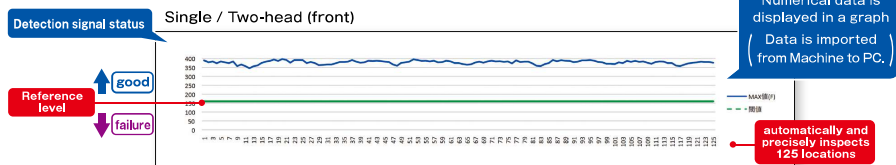
Scan the QR code on the left with a barcode reader on your smartphone or tablet device.

## Differences from Conventional Inspections



## Hashima Needle Detector New Inspection Service

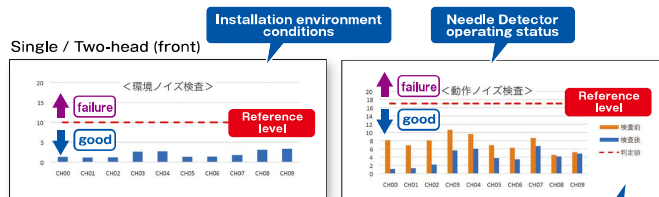
**01** A new automatic inspection system automatically and precisely inspects 125 locations within the detection area. Graphical indication of good/failure.



**Advantages**

- Automatically inspectable
- Graphing of inspection results

**02** Graphical representation of the installation environment and inspection of operating conditions important for Needle detector.



Graphing of proper inspection data for installation environment and operating conditions. (Data is imported from Machine to PC.)



The appropriateness of the installation environment of Needle Detector can be inspected and confirmed.

**03** Electronic data with certificate and report.

**Advantages**

- Approval with report and inspection results
- Electronic certificate issued

After inspection, a "Report-2" will be issued, and if the level is cleared A certificate of precision inspection is officially issued.

\*This precision inspection certificate is performed by an authorized Hashima technician. If the inspection results do not meet the requirements, the certificate will not be issued.

**04** The original inspection report is stored on the Hashima Cloud Server and can be accessed at any time and from anywhere. You can check it.

**Advantages**

- QR code on the certificate: Secure service for easy confirmation of inspection results
- PDF certificates and reports can be downloaded from the Hashima Cloud server from anywhere by reading the QR code, allowing you to share information with your customers.

QR code is included on the certificate allowing easy confirmation of test results.

