



SMARTEX⁺ INSPECTED FABRIC

100% AI-Powered Fabric Inspection

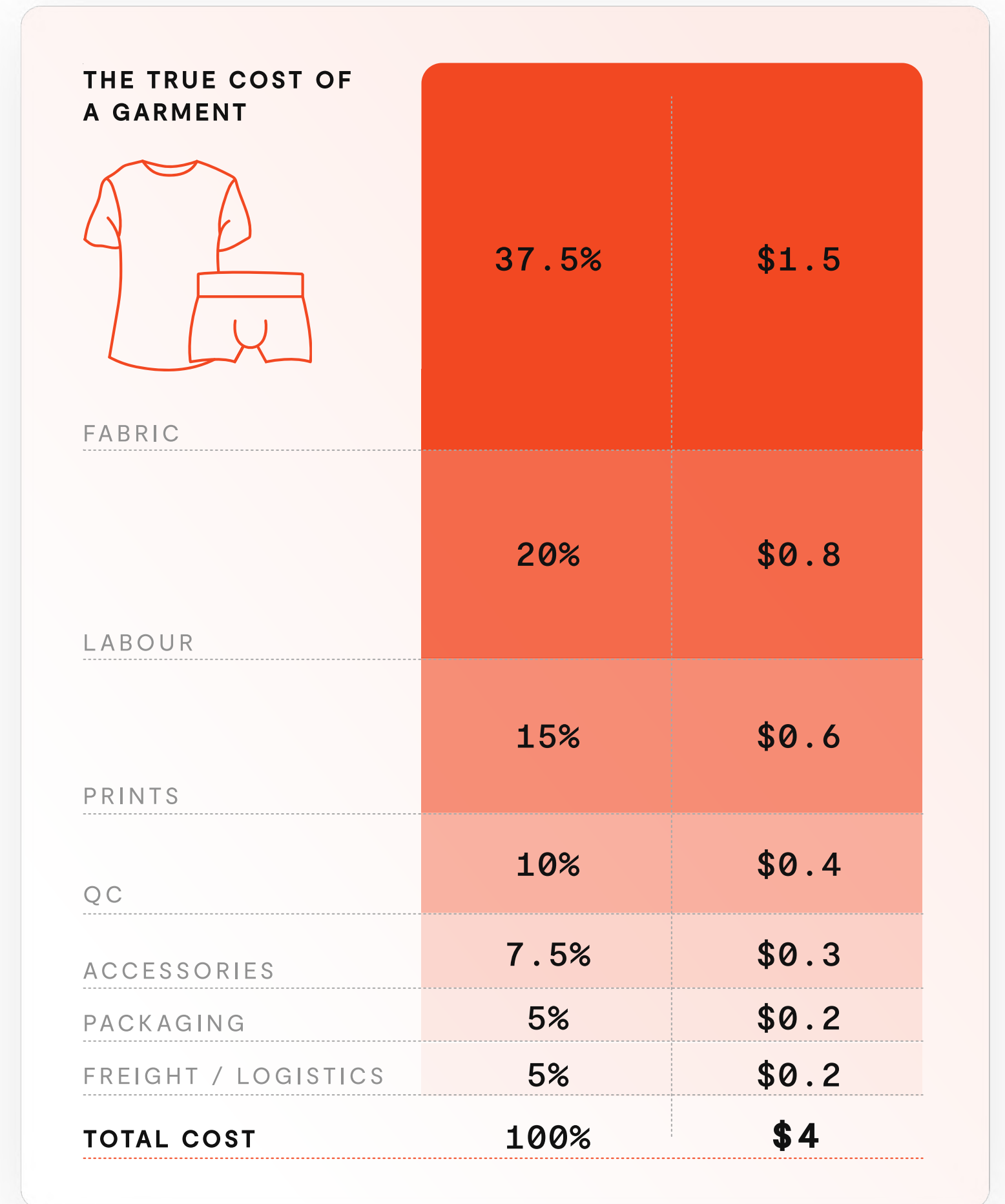
Boost Margins
Improve Quality
Reduce Waste
Increase Speed

SMARTEX.AI

Try Pitch

Grade A fabric is fundamental to an efficient garment facility.

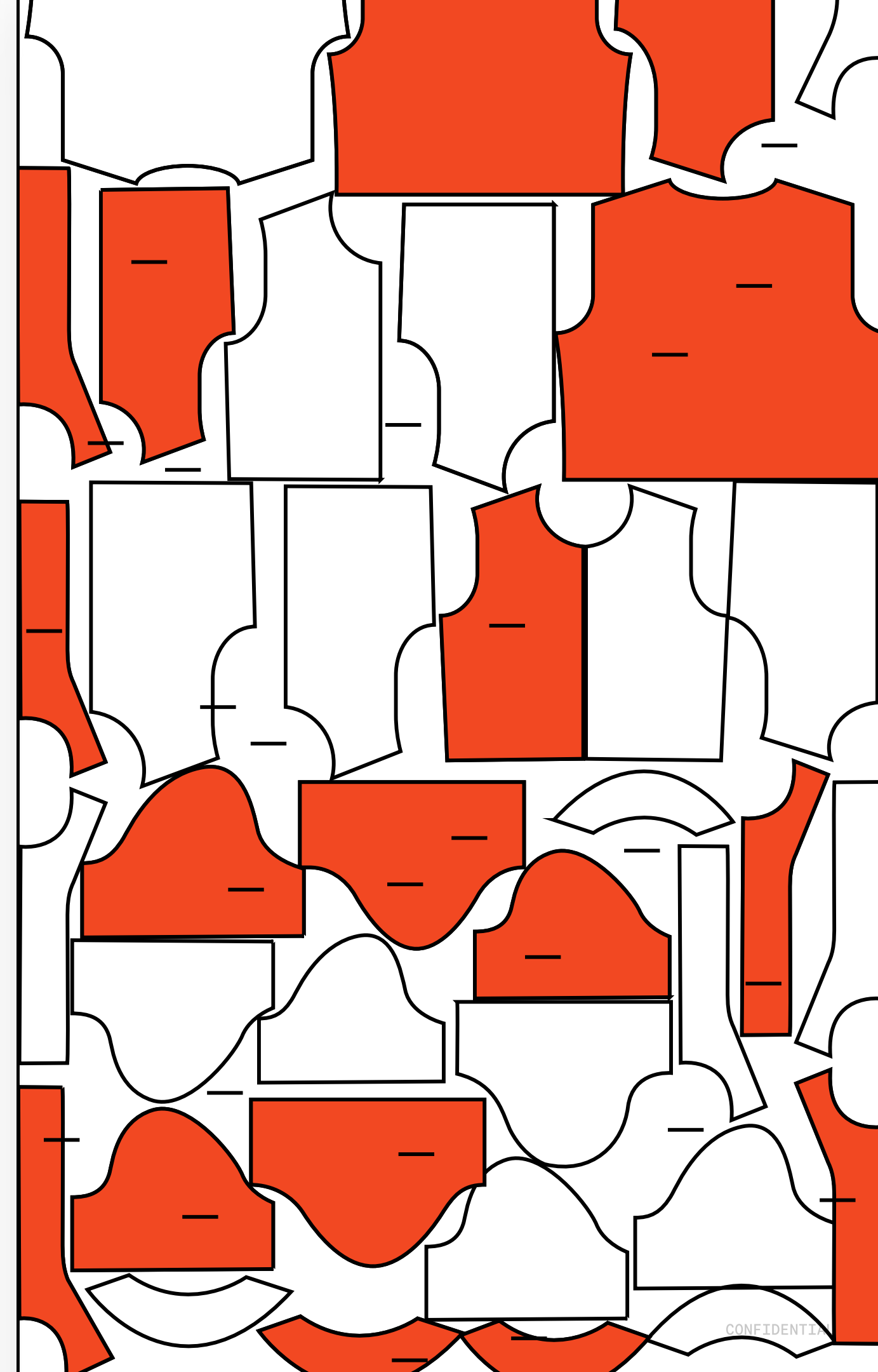
Fabric accounts for 40% of garment cost, 80% of timeline & 80% of CO2 emissions.



Despite QC processes in place, **on average >5% of fabric has defects & ends up on the cutting table.**

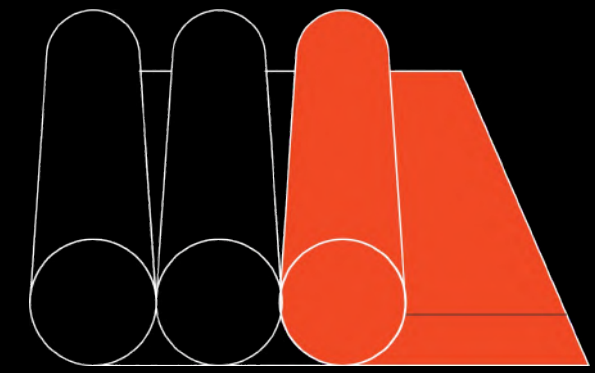
This leads to **significant garment losses, delays & unnecessary environmental impact.**

RESOURCES & MONEY ARE LEFT ON THE (CUTTING) TABLE

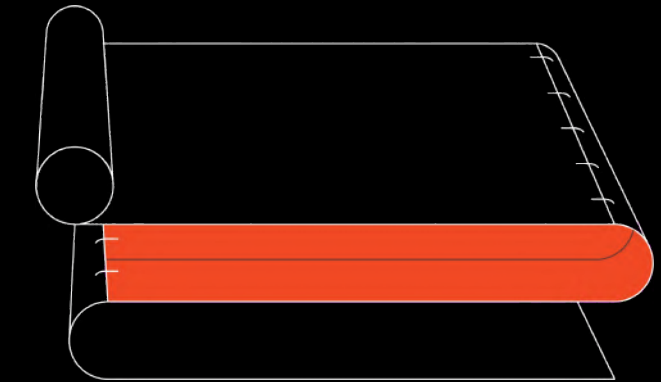


Your supplier's problem becomes your problem.

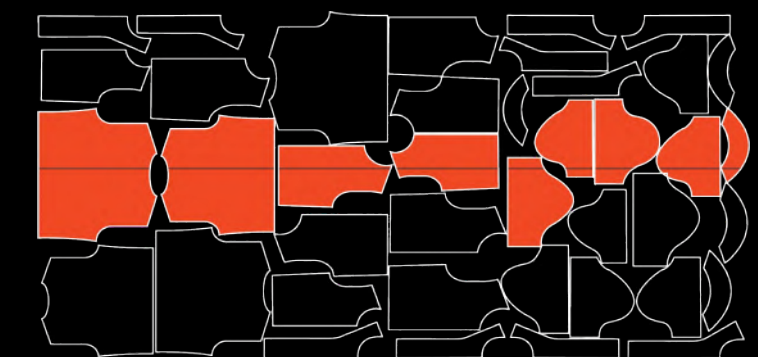
Defective fabric is created in the **knitting & dyeing stage**. However, due to inconsistent, manual quality control, these defects are shipped downstream.



K N I T T I N G



D Y E I N G



G A R M E N T



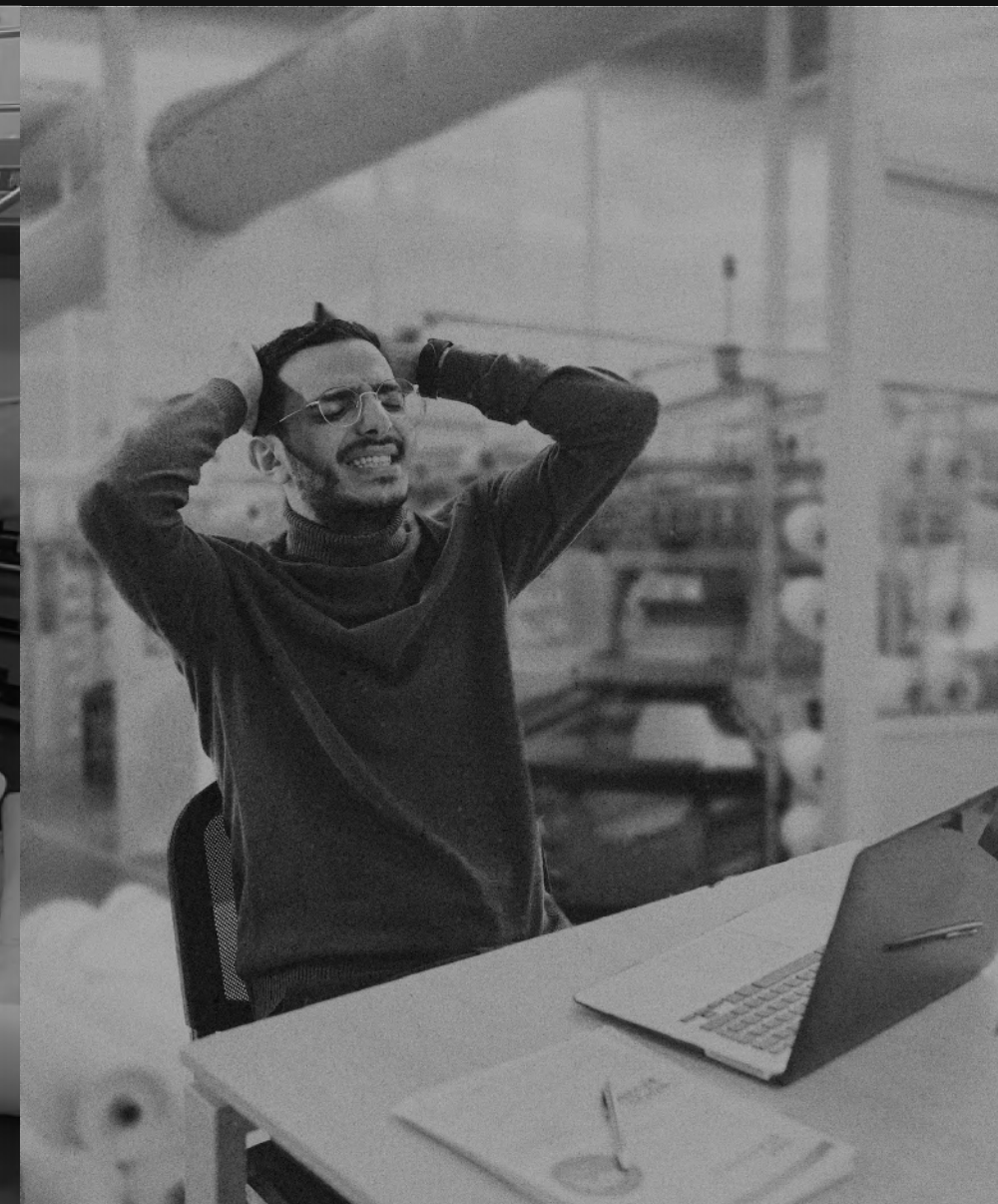
Defective Garment is rated **Poor**

Based on 12,364 reviews



★ Trustpilot

SUBJECTIVE, **UNRELIABLE** & SLOW QUALITY CONTROL



THE CONSTANT CHALLENGE OF

Unreliable Quality Control

Undetected Defects


Low Quality Fabric Mistakenly Shipped to Customer


Lack of Evidence

No Ability to Review Inspection Work or Warn Customer

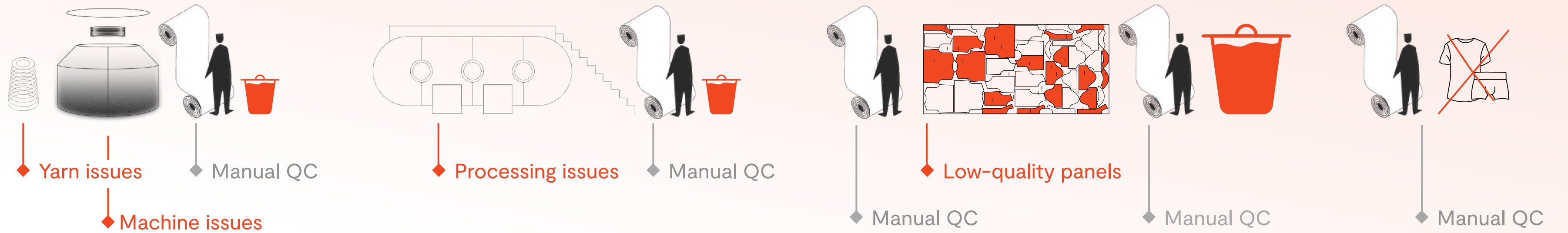
Quality Complaints

Damaged Relationships & Loss of Future Sales

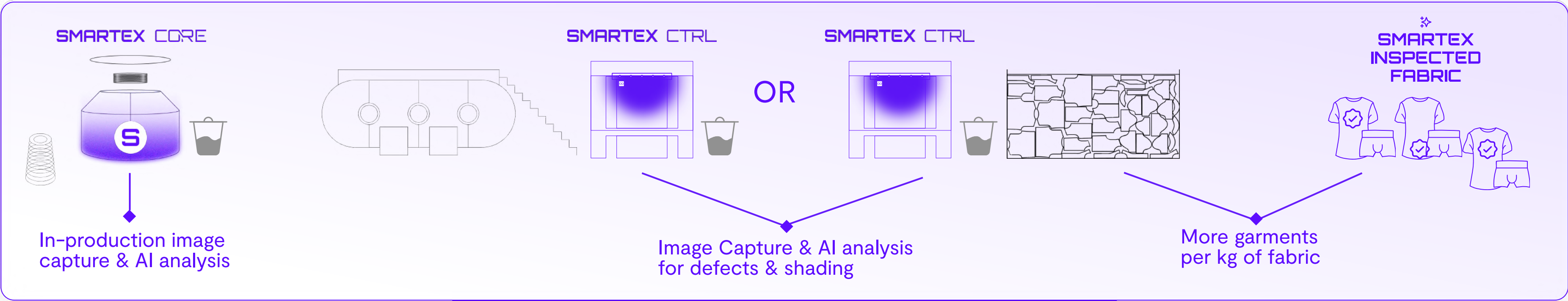
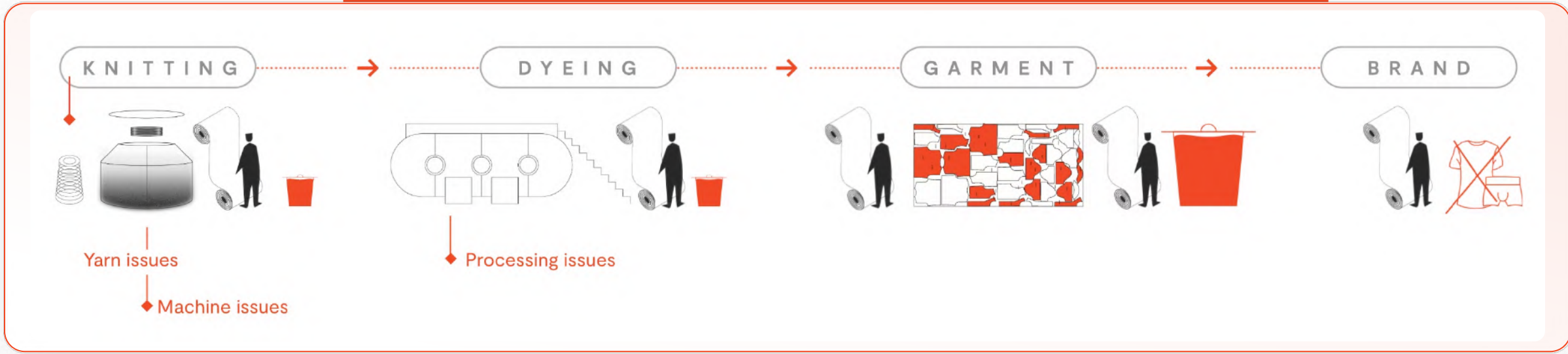
 Chinese H&M manufacturer had a **short shipment of 20%** because of unknown **defective fabric** issues. Dyehouse was charged for fabric but lacked digital record to assign blame between itself & its knitter.

 Leading dyehouse shipped low quality fabric & **the entire order was shipped back**. As a result, the company **lost 1M€**.

INEFFICIENT GARMENT SUPPLY CHAIN



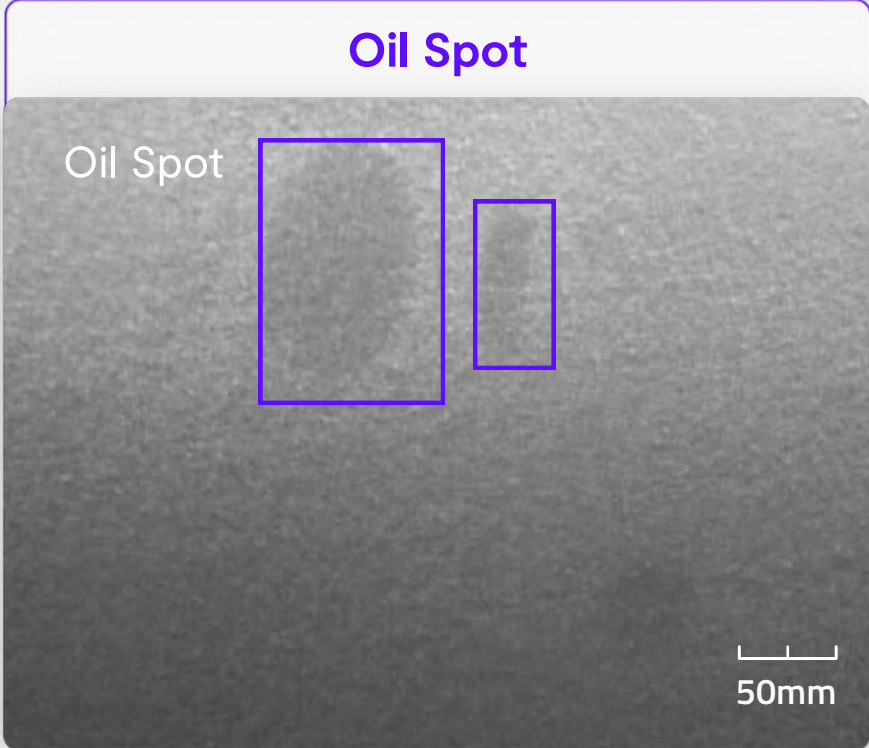
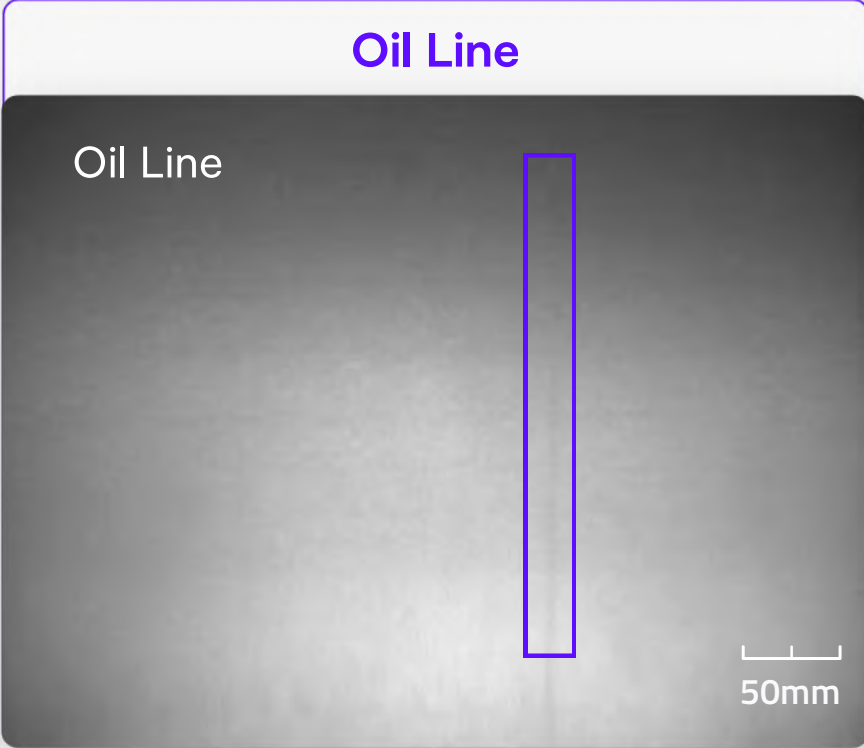
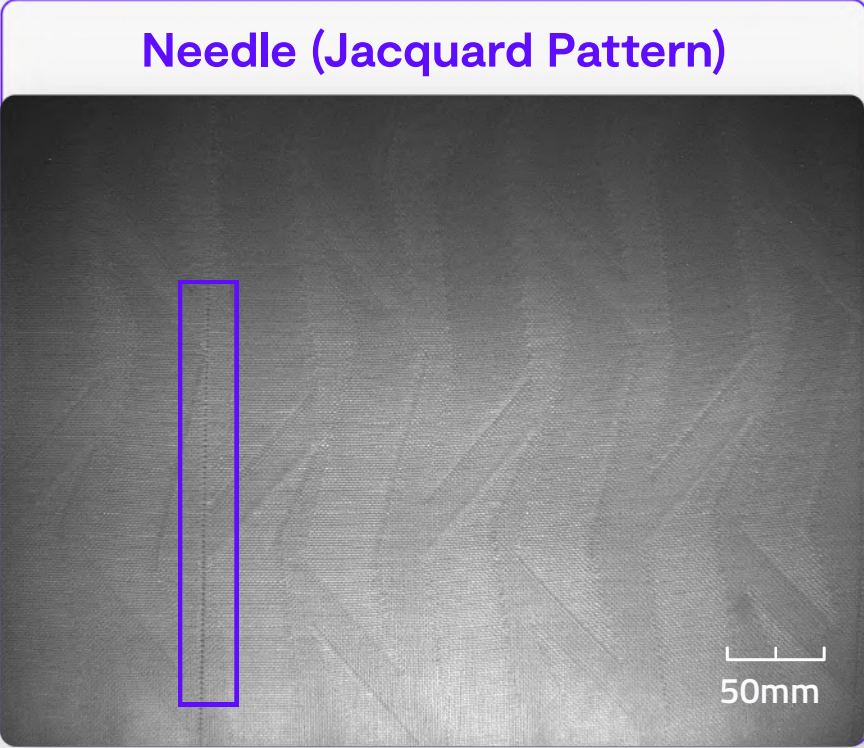
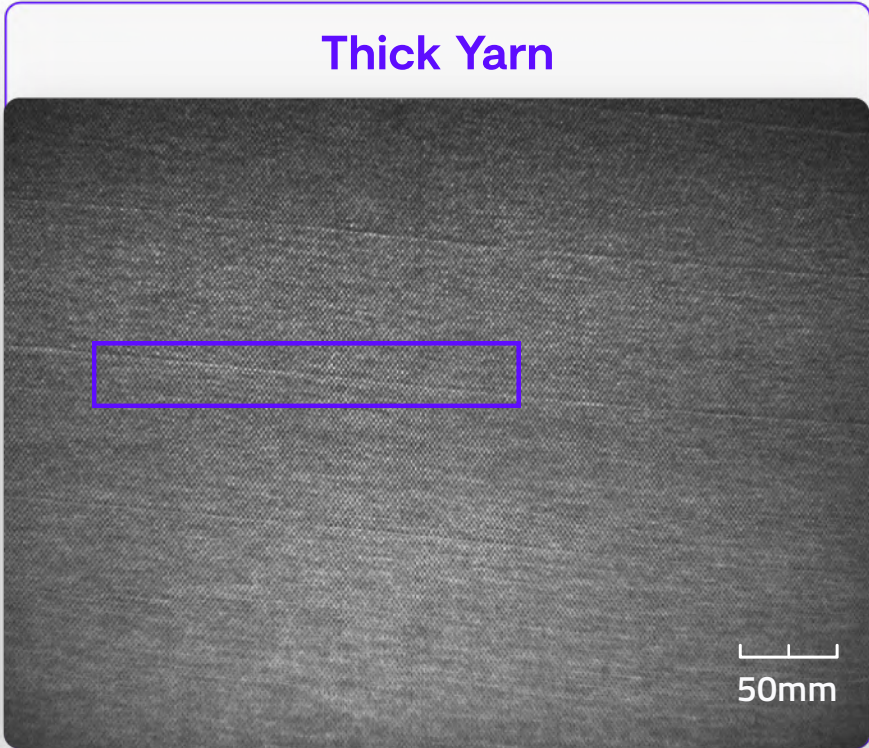
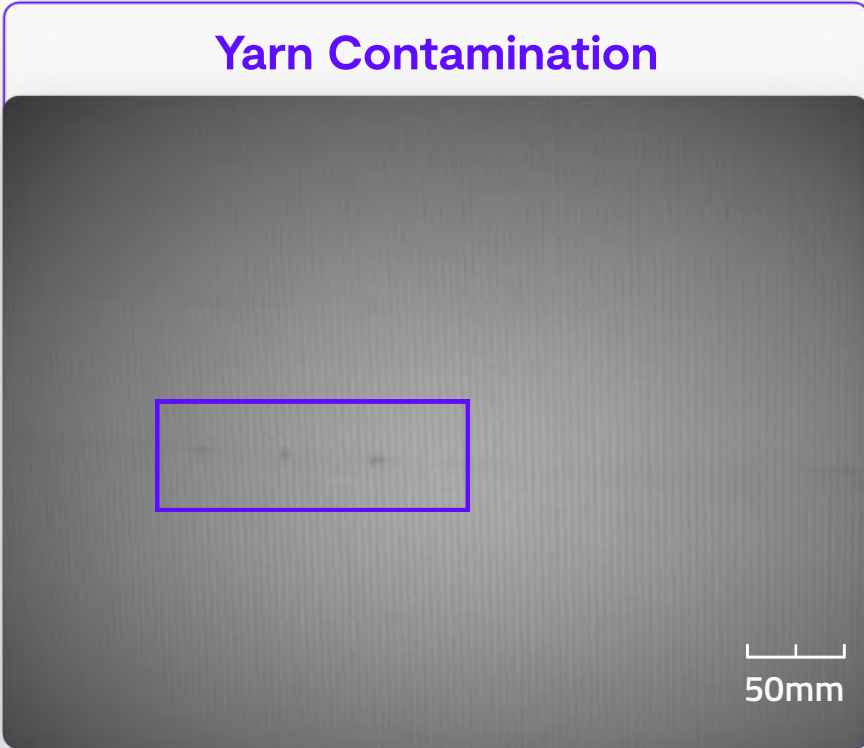
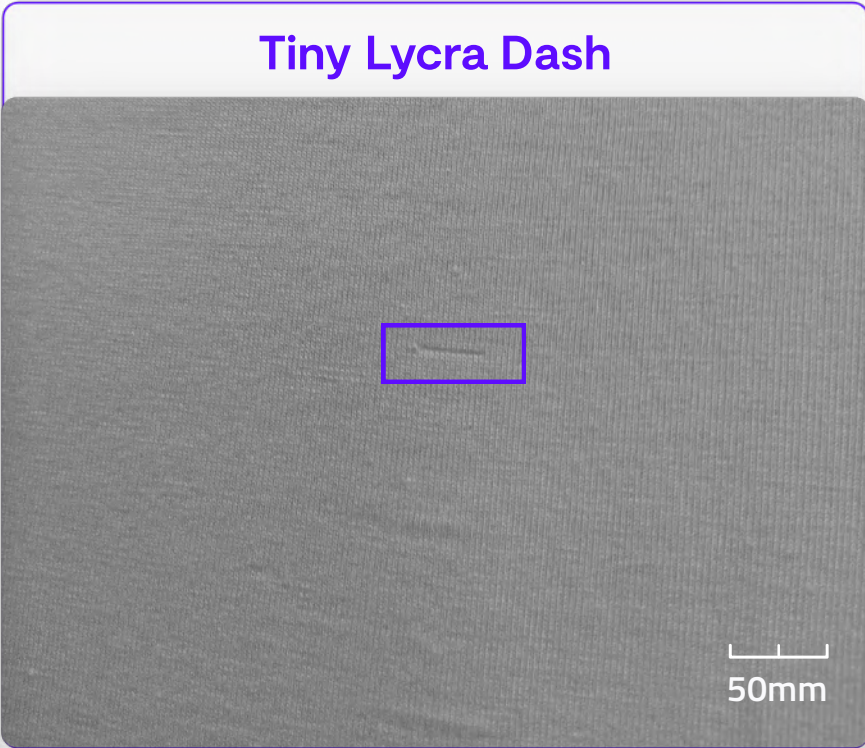
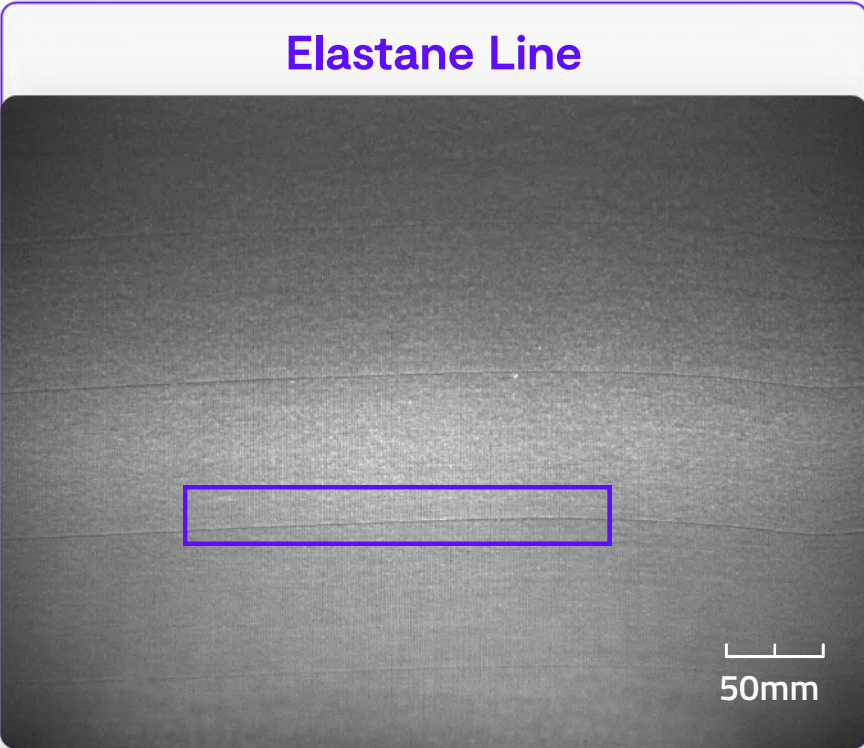
INEFFICIENT GARMENT SUPPLY CHAIN



OPTIMIZED GARMENT SUPPLY CHAIN

The Power of AI Inspection

- ◆ Jersey, Interlock, Pique, Italian, Fleece & others.
- ◆ Conventional Cotton, Organic Cotton, Lyocell, Viscose Polyester and more, 100% or blended (with or without elastane).
- ◆ Raw Yarns, Dyed Yarns, Melange Yarns, etc.



No more missed defects.

Smartex's advanced quality control gives more confidence & assurance of delivering quality fabric — every time.





Communicate Objective Quality Data

SPECTRUM

TEXTILES

PO 23048540101
ORDER 241357899
SHIPMENT DATE 12.07.24

PRODUCTION INFO

Weight 1,900 kg	Width 1.7 m	Color 18-4835 TCX
---------------------------	-----------------------	-----------------------------

Code
MCM/JEBZ51Z44F84120

Material Fiber Specs
Pique 40/1 100%CO BCI | 170g

FACILITY

Factory ID
BD2019087ZY8JF8

Location
Spectrum Textiles Dyehouse Ltd., 175
Industrial Road, Dhaka, Bangladesh

AI inspected
SMARTEX.AI

QUALITY REPORT

Needle	11 m
Lycra	3 m
Abraj	0.2 m

Total Defects 17.7 m

Full quality data available on the Digital Report:



Total potential savings
327 m

With 100% Smartex enhanced knitting & dyeing facilities.

SMARTEX INSPECTED FABRIC

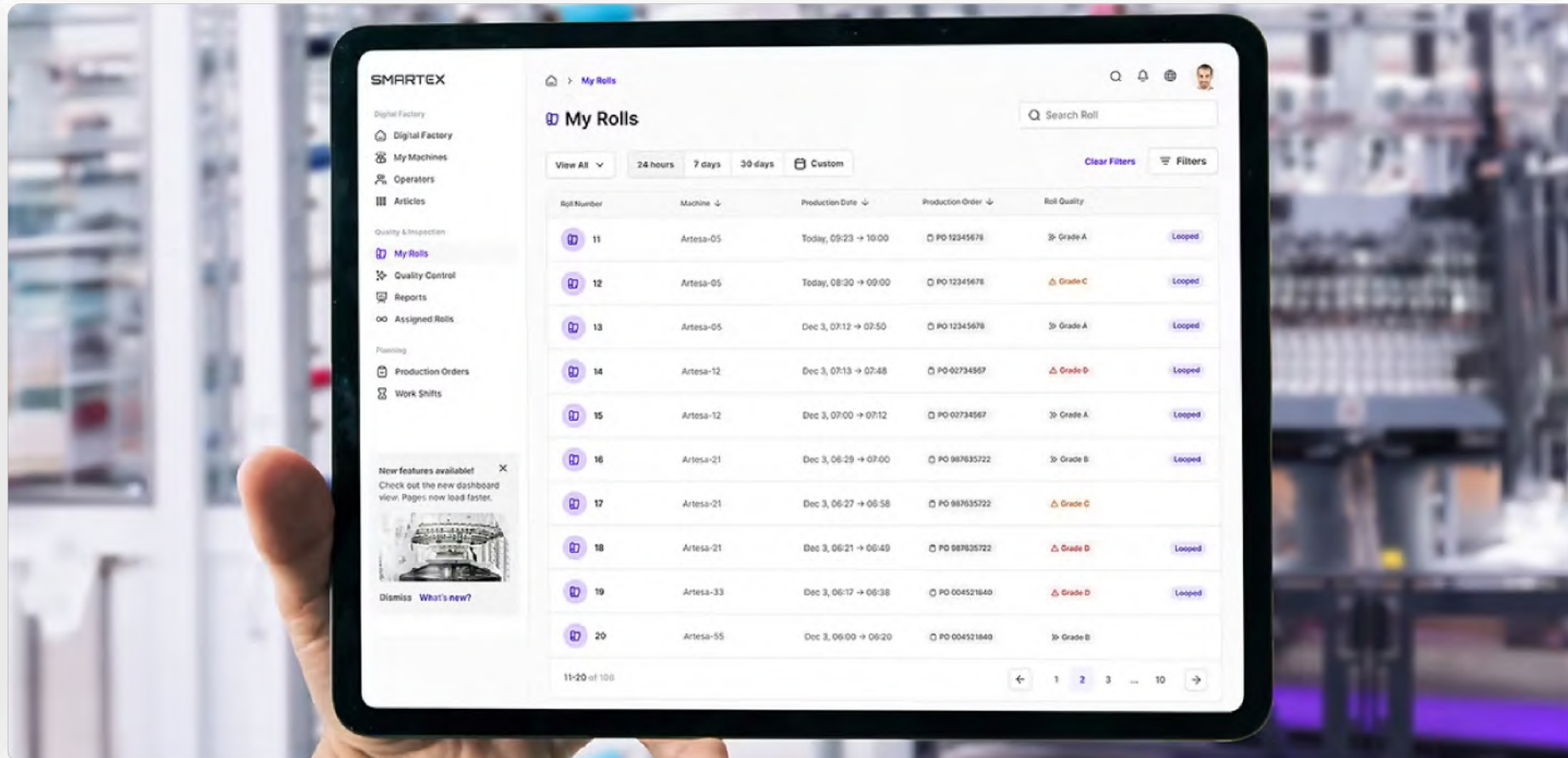
Product System

Hardware (Cameras & Tablets) · Software (AI-powered apps)

SMARTEX CORE

SMARTEX CTRL

SMARTEX FACT



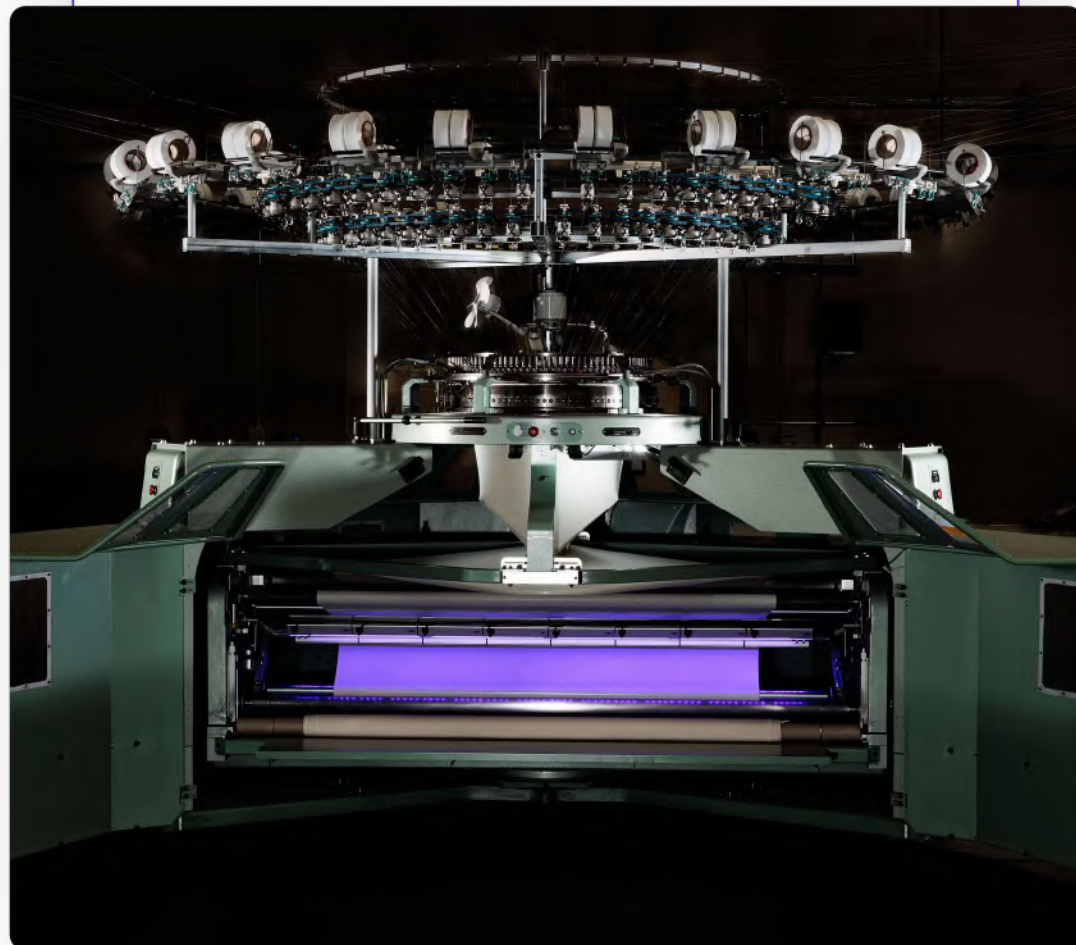
Sold over 800 systems

CORE

KNITTING

Open-Width Circular Knitting Machine AI Inspection

100% Real Time Inspection



Stops Defects During Production



Cameras & AI Analysis



Gateway to Digital Quality Control

FACT

- KNITTING
- DYEHOUSE
- GARMENT

On-Demand Quality Reports & Insights

Real-Time, Accurate Quality Reports

SMARTEX INSPECTED FABRIC

Production Order Quality Report 104364
Exported at 6/9/2025, 07:47:26

Points per Defect Category (per meter) and Grading Criteria (total points per roll) as of 6/9/2025

Horizontal	Vertical	Spotty	Oil	Grade A	Grade B	Grade C	Grade D
4	3	2	1	[0 - 15]	[16 - 35]	[36 - 45]	[46 +]

PO Summary

Status	In Progress
Start Date	29/05/2025 17:30
End Date	--
Article Reference	No Elastan
Machines	127, 126
No. of Rolls	50
Total Produced (m)	5755
Total Defect (m)	821
Total Defect (%)	14.3

Roll Grades Analysis

	Total rolls	%	Machines
Grade A	26	52.0%	127, 126
Grade B	5	10.0%	127
Grade C	2	4.0%	127
Grade D	17	34.0%	127
No Grade	0	0.0%	
Total	50	100.0%	

Defect Analysis

	Defects	%
Horizontal	898	69.8%
Spotty	20	2.4%
Vertical	171	26.9%
Oil	15	0.9%

Machine Details

Detailed Roll Quality & Images

My Rolls > Roll 12

Production: Machine 105 | 2 hr 9 min

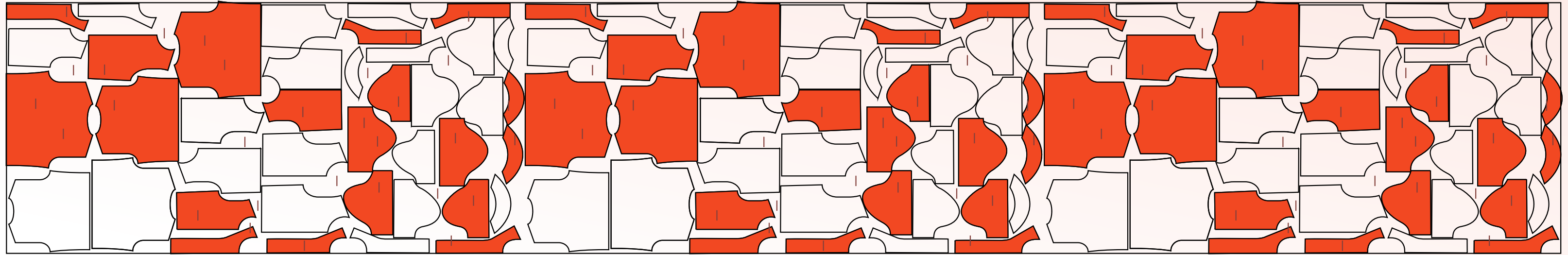
Quality: Grade C | 26 Defects | 11.92 m

Infrared Light | Top View | Show Stops

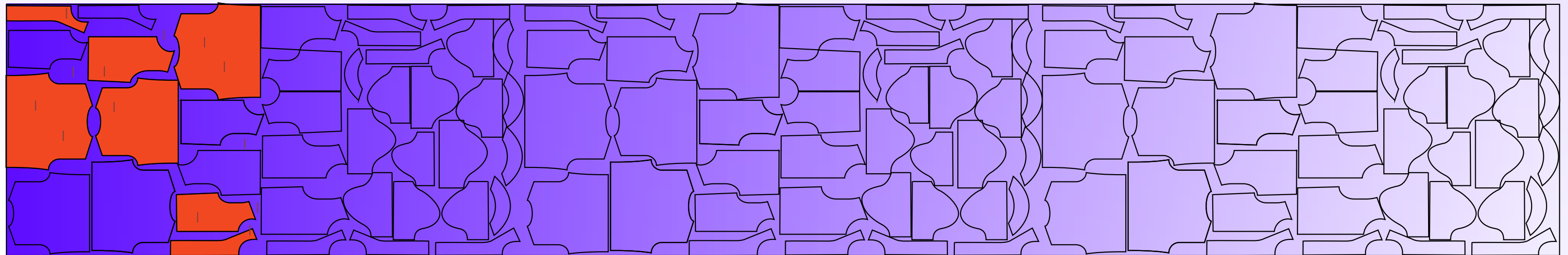
Meters	@ 01	@ 02	@ 03	@ 04	@ 05	@ 06	@ 07	@ 08
66.23 m								
66.39 m								
66.56 m								
66.72 m								
66.88 m								
67.03 m								
67.18 m								
67.34 m								

@ Stopped for 1min 06sec

Fabric without Smartex CORE



Fabric with Smartex CORE



MAJOR SWEDISH RETAILER

ARVIND
INDIA



15,718 t-shirts
5,019 kg fabric
Single Jersey

Recycled lycra 96% Cotton 4%
160 GSM



Savings

10¢
per garment

Garments per Kg of fabric

+8%

Avg Garment Cost

-8%

\$ Monthly License Pay-off

1 day

Pure profit for rest of month

MAJOR SWEDISH RETAILER

FAKIR FASHION
BANGLADESH



19,000 t-shirts
4,000 kg fabric
1x2 Lycra Rib

95% Cotton+Viscose 5% Elastane
200 GSM



Savings

4¢
per garment

Grade F Fabric

-65%

Grade A Fabric

+35%

€ Monthly License Pay-off

2 days

Pure profit for the rest of the month

US LUXURY FASHION LABEL

YESIM
TURKEY



11,040 t-shirts
2,479 kg fabric
26/1 COMPACT PENYE
Single Jersey
Without Lycra
165 GSM



Savings

1¢
per garment

Fabric Productivity

+2%

Rejected Garments

-50%

€ Monthly License Pay-off

6 days
Pure profit for the rest of the month

DANISH FASHION GROUP

GMS
BANGLADESH



10,573 t-shirts
2,487 kg fabric
Single Jersey
92% Cotton (100% BCI)
+ 8% Elastane
170 GSM



Savings

2¢
per garment

Fabric Productivity

+2%

Rejected Garments

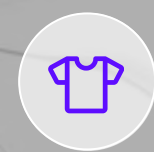
-65%

€ Monthly License Pay-off

5 days
Pure profit for the rest of the month

GERMAN SPORTSWEAR BRAND

FAKHRUDDIN
BANGLADESH



27,364 t-shirts
5,679 kg fabric
Single Jersey

100% Cotton (25% recycled)
160 GSM



Savings

3¢
per garment

Fabric Yield

+2%

Time Spent Repairing Defects

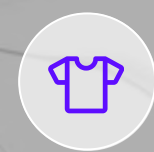
-55%

€ Monthly License Pay-off

3 days
Pure profit for the rest of the month

GERMAN SPORTSWEAR BRAND

FAKHRUDDIN
BANGLADESH



3,636 t-shirts
870 kg fabric
Single Jersey
75% BCI cotton 25% Recycle
Cotton
160 GSM



Savings

3¢
per garment

Fabric Yield

+3%

Avg Garment Cost

-2%

€ Monthly License Pay-off

3 days
Pure profit for the rest of the month

UK RETAIL CHAIN

FAKHRUDDIN
BANGLADESH



8,376 t-shirts
2,053 kg fabric
Single Jersey & Rib
100% Cotton, No Lycra
140 GSM



Savings

6¢
per garment

Fabric Yield

+4%

Avg Garment Cost

-4%

€ Monthly License Pay-off

2 days
Pure profit for the rest of the month

UK RETAIL CHAIN

FAKHRUDDIN
BANGLADESH



7,204 leggings
2,422 kg fabric
Single Jersey & Rib
100% Cotton, No Lycra
140 GSM



Savings

10¢
per garment

Fabric Yield

+5%

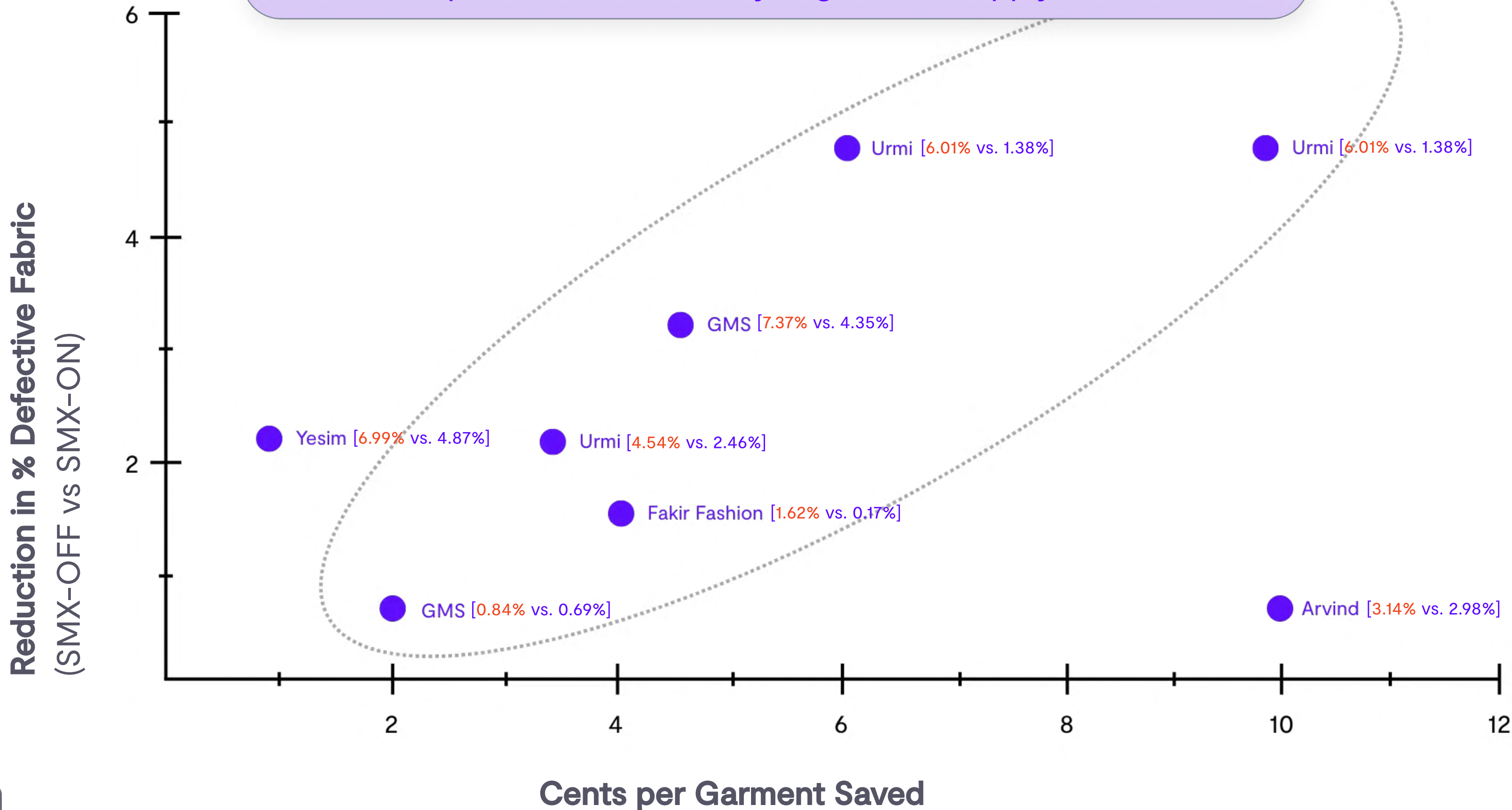
Avg Garment Cost

-5%

€ Monthly License Pay-off

2 days
Pure profit for the rest of the month

Smartex Impact demonstrated by large-scale, supply chain A-B Tests



Launching Q1 2027 in Hong Kong

CTRL

DYEHOUSE

GARMENT

Finished Fabric AI Inspection (+ Shading)

100% Inspection & Width Measurement




Color Shading Add-On



Quality Label & Groupings

Demotex
Smartex.ai Inspected Fabric

001



Quality Summary

Structure	Grade A
Colour	Passed

Colour Shade Group
Complete at end of batch

Stick here

TRY OUT

AI fabric inspection at *no cost*

We're confident we can show you the benefits so the only investment to run this pilot is *your time*.

- ✓ Pilot at zero cost
- ✓ SMX ON/OFF validation in the factory
- ✓ Objective, AI-captured data
- ✓ Faster, data-driven decisions



SMARTEX ✨ INSPECTED FABRIC

100% AI-Powered Fabric Inspection

Boost Margins
Improve Quality
Reduce Waste
Increase Speed

Email:
sales@smartex.ai

Website:
www.smartex.ai