

Built-in **Pure** Direct Drive Motor



PEGASUS

NEW



W500PC series

Flatbed, interlock stitch machine

NEW



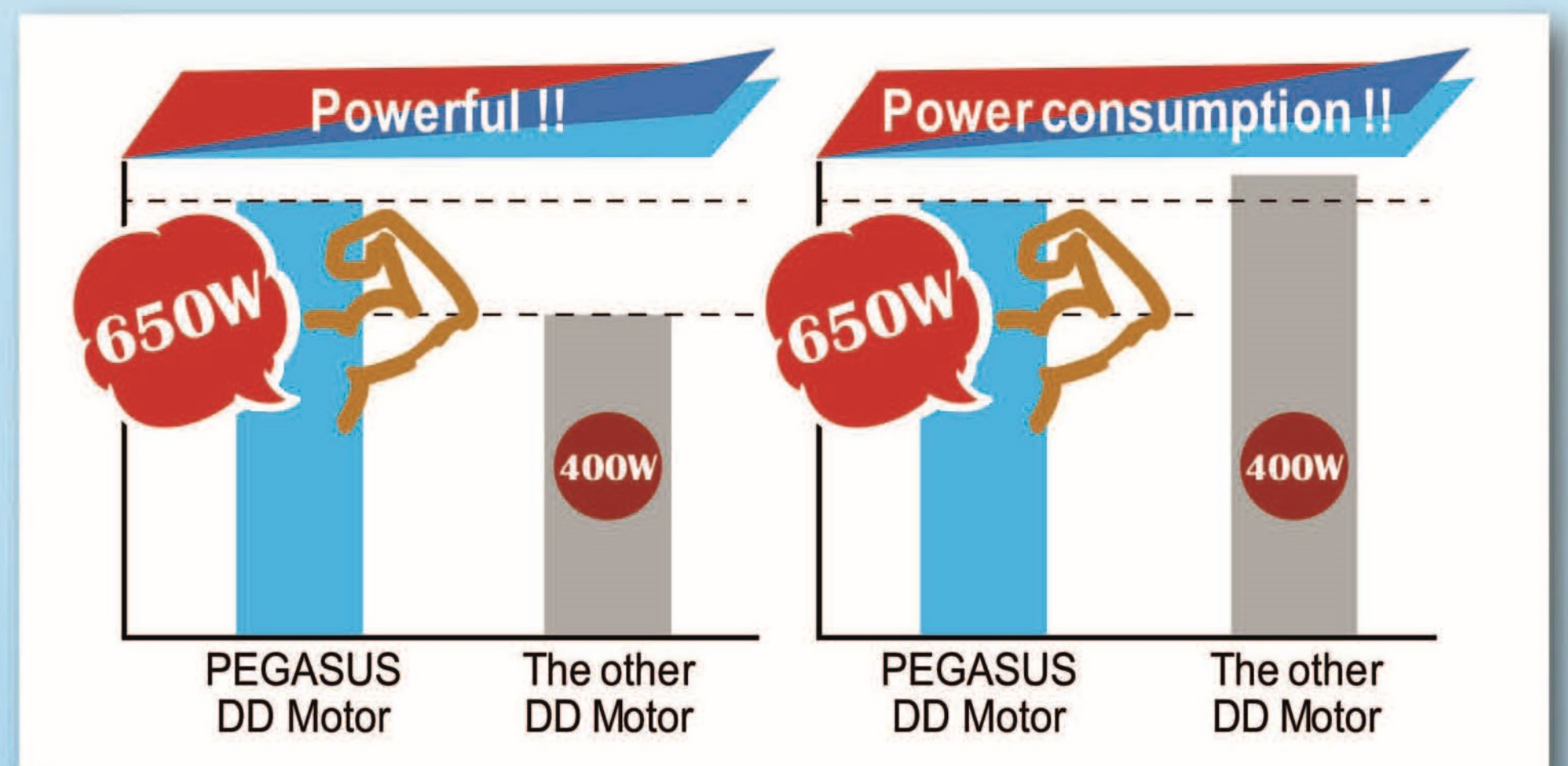
W600PCH series

Cylinderbed, interlock stitch machine

W500PC, W600PCH / D322, D332 Series



ORIGINAL MOTOR



※With a machine speed of 4,000 sti/min, intermittent drive (2 sec drive and 2 sec stop)

Point

1 Built-in **Pure** Direct Drive Motor

● PEGASUS Original Motor

Designed and manufactured by PEGASUS.

PEGASUS Original

● CE Marking

Compliance to standards in EU.



● User Friendly

■ Quick and Easy Installation.

■ Motor Structure

- Sealed Motor Coil
- Dust Protection and Heat Prevention.
- No Coupling
- Direct Transmission and Easy Setup.

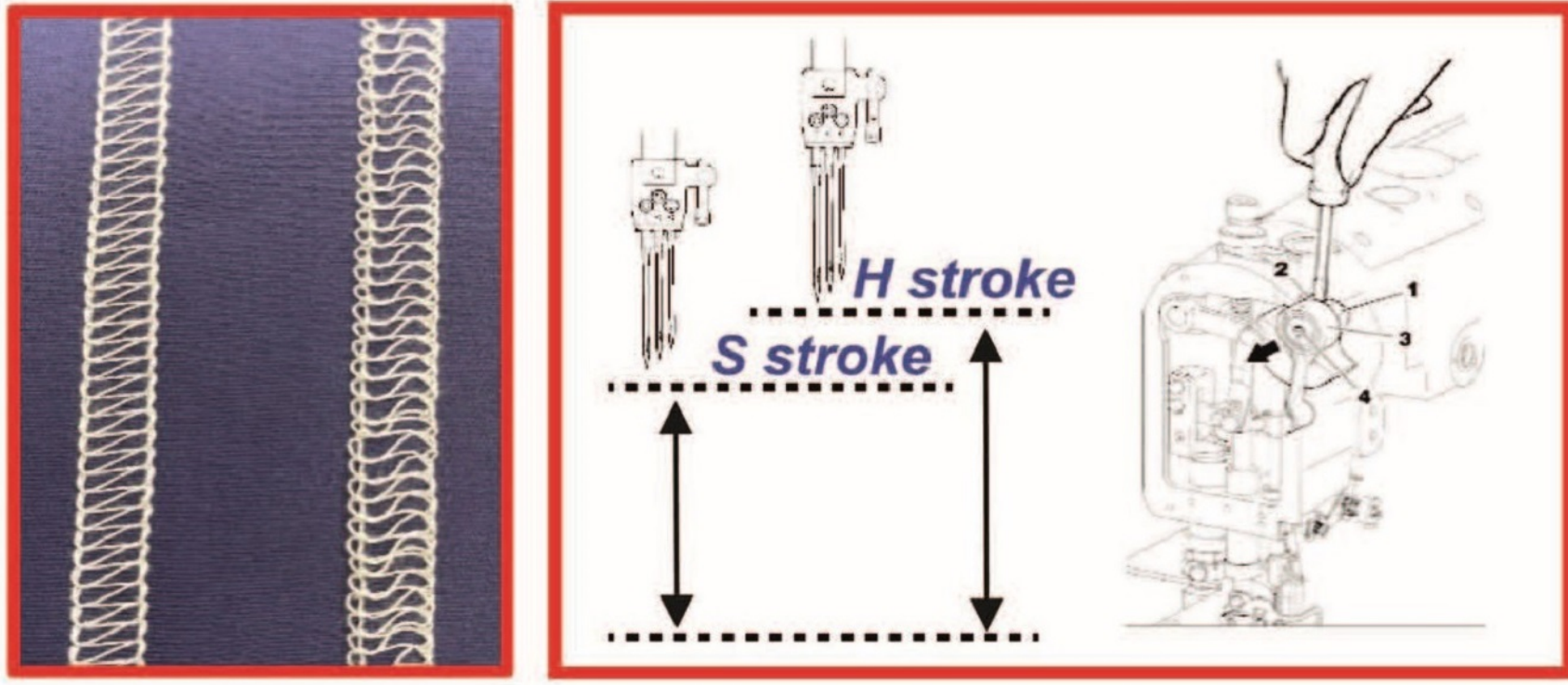
■ High power, 650W.

■ You simply press the pushbutton while turning the handwheel. Changing the needle stop position is easy. (only on the D332 series)

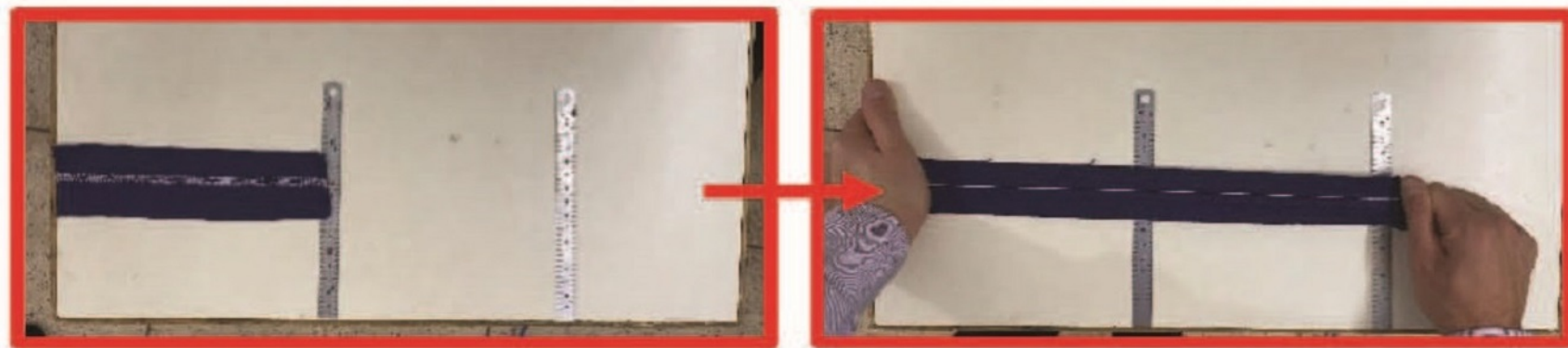
Patented Design

Point 2 Multi-Thread Control System

"Soft & tight seam" can be easily changed with simple adjustment. It is compatible with a variety of products from ultra light to heavy weight fabrics. By changing the needle bar stroke according to the thickness of the fabric, more comfortable productivity can be obtained.

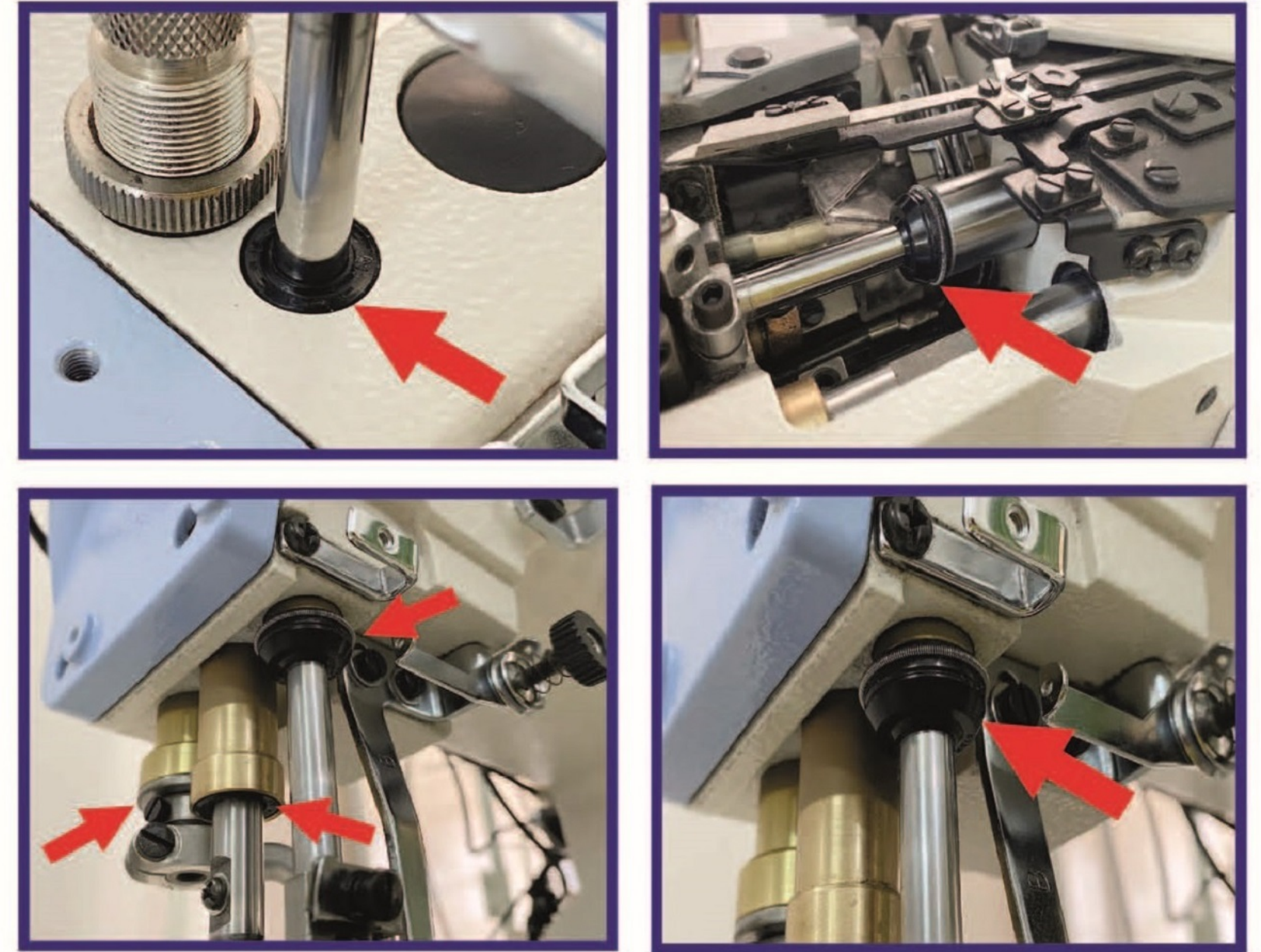


Stretch over 200% for ultralight fabric and athletic wear, etc.



Point 3 Perfect Block oil leakage!

The Oil Seals employed exert dramatic "Oil Barrier" effectiveness, blocking the leakage of even one drop of oil from the Needle Bar and other relevant parts while the machine is running, and even while the machine is stopped at night.



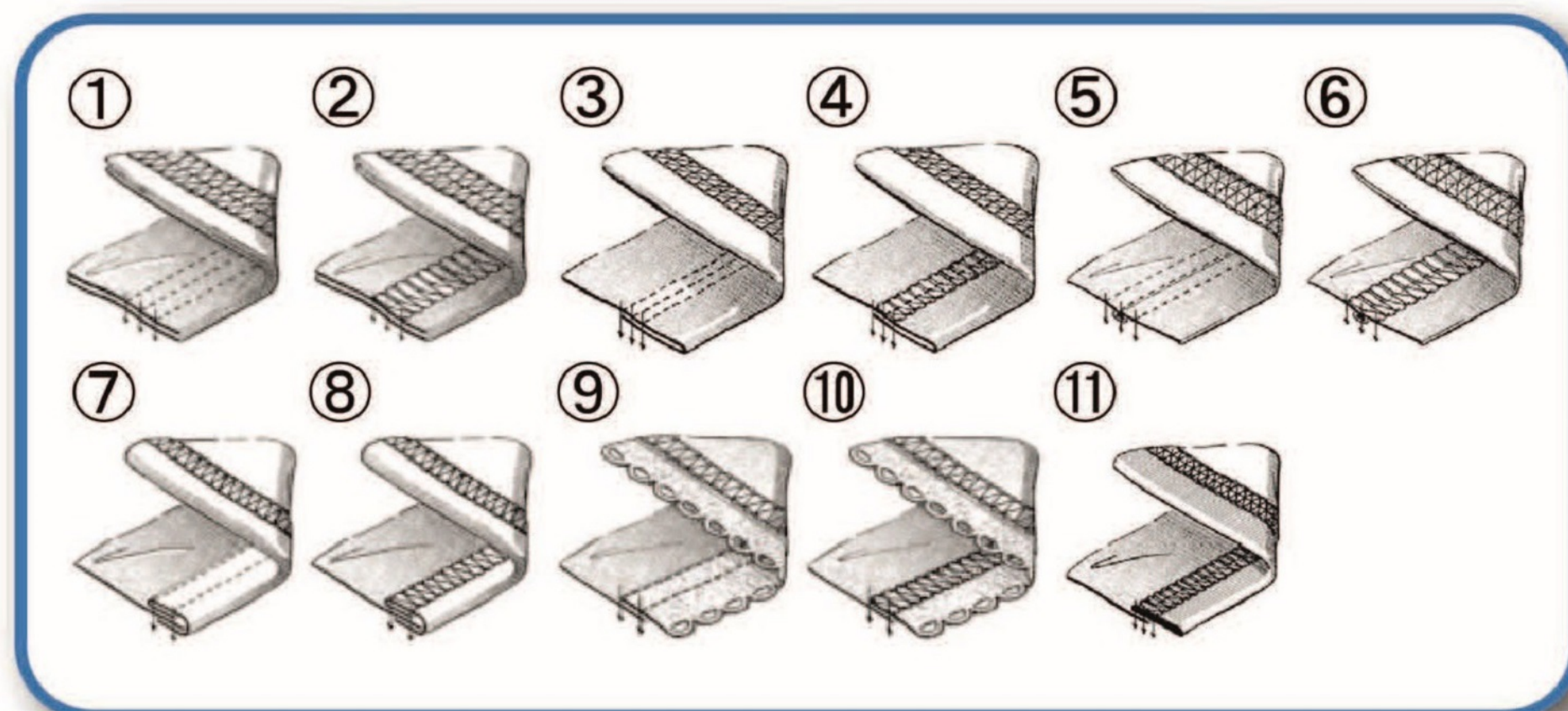
W500PC/D322,D332 : Flatbed, interlock stitch machine

Seam	Application	Subclass	No. of needles	No. of threads	Needle space (mm)	Max speed (sti/min)		Standard equipments / Accessories	Motor		Remarks
						D322	D332		D322	D332	
①② ③④ ⑤⑥	Plain seaming (Covering) (Hemming)	W562PC-01G	2	3•4	3.2•4.0	5,000	6,000	Hemming guide Covering guide		UT	
			3	4•5	4.8•5.6•6.4						
⑦⑧	Binding tape	W562PC-02G	2	3•4	3.2•4.0	5,000	6,000	Binder blacket Tape guide			TK(Optional)
			3	4•5	4.8•5.6•6.4						
⑨⑩	Attaching elastic lace	W562PC-05C	2	3•4	3.2•4.0•4.8	5,000	5,500 (5,000 with MD)	FT	LC	LC	MD.TK(Optional)
			3	4•5	5.6•6.4						

W600PCH/D322,D332 : Cylinderbed, interlock stitch machine

Seam	Application	Subclass	No. of needles	No. of threads	Needle space (mm)	Max speed (sti/min)		Standard equipments / Accessories	Motor		Remarks
						D322	D332		D322	D332	
①② ③④ ⑤⑥	Plain seaming (Covering) (Hemming)	W662PCH-01G	2	3•4	3.2•4.0•4.8	5,000	5,500	Hemming guide Covering guide		UT	RP(Optional)
			3	4•5	5.6•6.4						
⑪	Attaching flat nit elastic tubular articles	W662PCH-33A	3	4•5	5.6•6.4	5,000	5,000	FT.RP	LC	UT.LC	
③④	Hemming	W662PCH-35B	2	3•4	4.0•4.8	5,000	5,000	FT	LC	UT.LC	RP(Optional)
			3	4•5	5.6•6.4						

UT: UT2R Electric thread trimmer, UT3R Pneumatic thread trimmer LC: Pneumatic lint collector FT: Fabric edge trimmer MD: Mechanical metering device TK: Tape cutter RP: Rear puller



Specification

	Max speed (sti/min)	Output power (W)	Device
Economy type D322	5,000 *	650	LC
Standard type D332	6,000 *	650	UT,LC

*See subclass chart



This Anti-copy (-counterfeit) Sticker certifies that the sewing machine is a genuine product of PEGASUS SEWING MACHINE MFG. CO., LTD. If you look at this sticker through an exclusive "viewer," an original PEGASUS hidden image will appear.

PEGASUS SEWING MACHINE MFG. CO., LTD.

5-7-2 Sagisu Fukushima-ku, Osaka 553-0002 Japan TEL : +81-6-6458-4739 / FAX : +81-6-6454-8785

<http://www.pegasus.co.jp>

* The specifications and/or appearances described in this catalog are subject to change without previous notice.

©2019 PEGASUS SEWING MACHINE MFG. CO., LTD.
Catalog No. 103119 Produced August 2019.

